

Screwed pipe connection DIN 11851

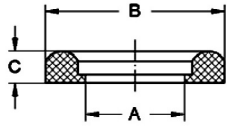
Art.No

EUR

Art.No

EUR

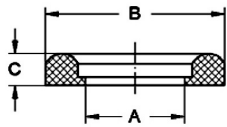
Gasket with collar DIN



DN	A	B	C			EPDM		FKM	
10	10,5	20	5			421930	1,00	422130	4,20
15	16,5	26	5			421931	1,00	422131	4,20
20	20,5	33	5			421932	1,00	422132	4,20
25	26,5	40	6			421933	1,50	422133	6,30
32	32,5	46	6			421934	1,50	422134	6,30
40	38,5	52	6			421935	1,50	422135	6,30
50	50,5	64	6			421936	1,70	422136	8,10
65	66,5	81	6			421937	2,00	422137	10,20
80	81,5	95	6			421938	2,30	422138	13,30
100	100,5	114	6			421939	3,10	422139	18,50
125	125	142	7			421941	5,20	422141	30,30
150	150	167	7			421942	5,80	422142	32,40

Similar to DIN 11851

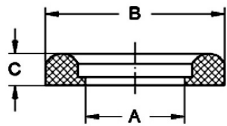
Gasket with collar DIN



DN	A	B	C			NBR		PTFE	
10	10,5	20	5			421830	0,90	422230	Enquiry
15	16,5	26	5			421831	0,90	422231	Enquiry
20	20,5	33	5			421832	0,90	422232	Enquiry
25	26,5	40	6			421833	1,20	422233	Enquiry
32	32,5	46	6			421834	1,20	422234	Enquiry
40	38,5	52	6			421835	1,20	422235	Enquiry
50	50,5	64	6			421836	1,40	422236	Enquiry
65	66,5	81	6			421837	1,80	422237	Enquiry
80	81,5	95	6			421838	2,10	422238	Enquiry
100	100,5	114	6			421839	2,80	422239	Enquiry
125	125	142	7			421841	4,30	422241	Enquiry
150	150	167	7			421842	5,10	422242	Enquiry

Similar to DIN 11851

Gasket with collar DIN



DN	A	B	C			VMQ	
10	10,5	20	5			422030	1,30
15	16,5	26	5			422031	1,30
20	20,5	33	5			422032	1,30
25	26,5	40	6			422033	1,70
32	32,5	46	6			422034	1,70
40	38,5	52	6			422035	1,70
50	50,5	64	6			422036	2,40
65	66,5	81	6			422037	3,00
80	81,5	95	6			422038	3,40
100	100,5	114	6			422039	4,80
125	125	142	7			422041	Enquiry
150	150	167	7			422042	Enquiry

Similar to DIN 11851

LINNE MANN
Rohrverbindungen • Edelstahlarmaturen
Pipe connections • Stainless steel fittings

LINNE MANN GmbH • Heerweg 14-16
72070 Tübingen / Germany

Fon: +49 (0) 7071 97555-0
Fax: +49 (0) 7071 97555-10

E-Mail: info@linnemann-online.com
Internet: www.linnemann-online.com